

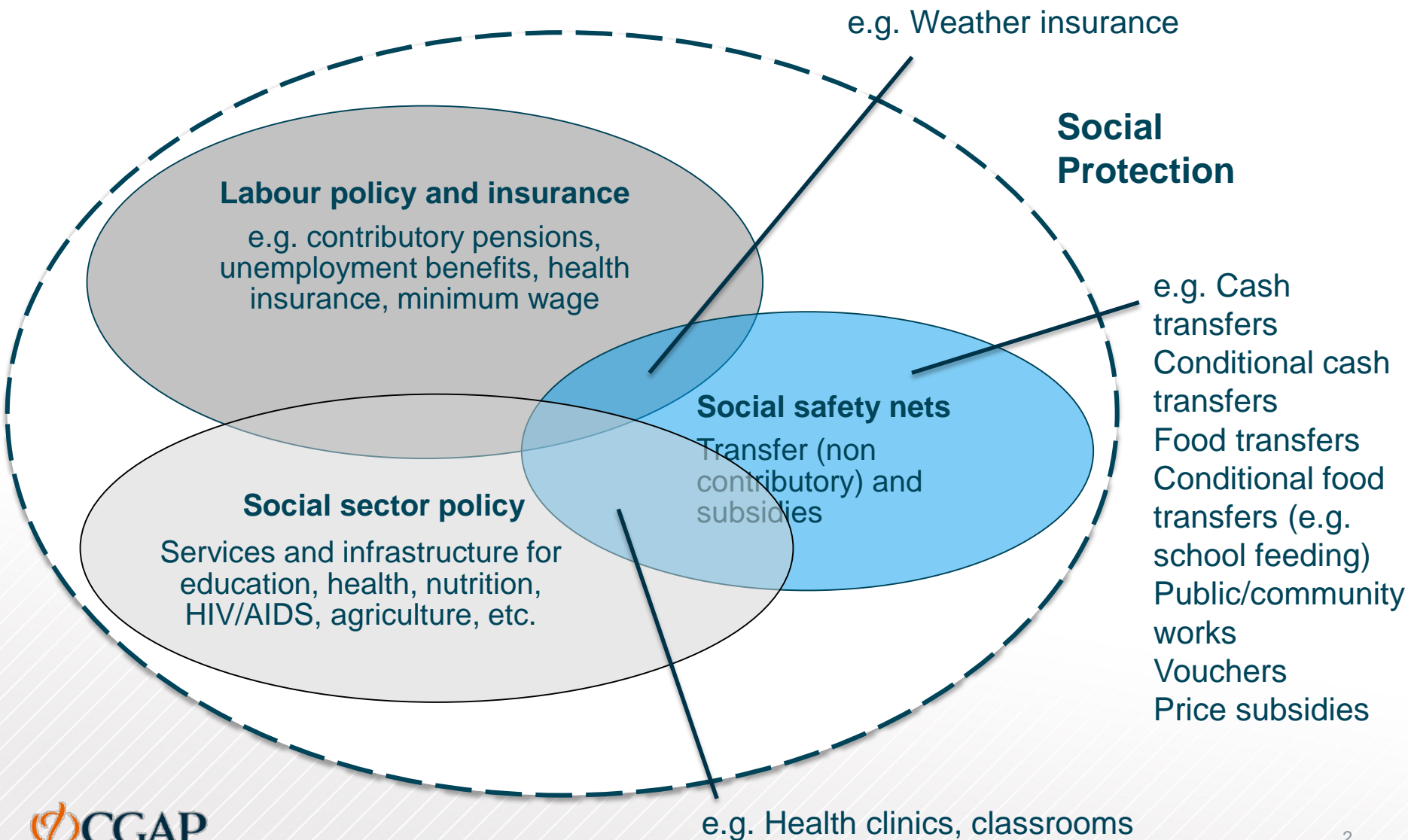


Graduating the Poorest

Syed M. Hashemi (CGAP) and Nathanael Goldberg (IPA)

April, 2016

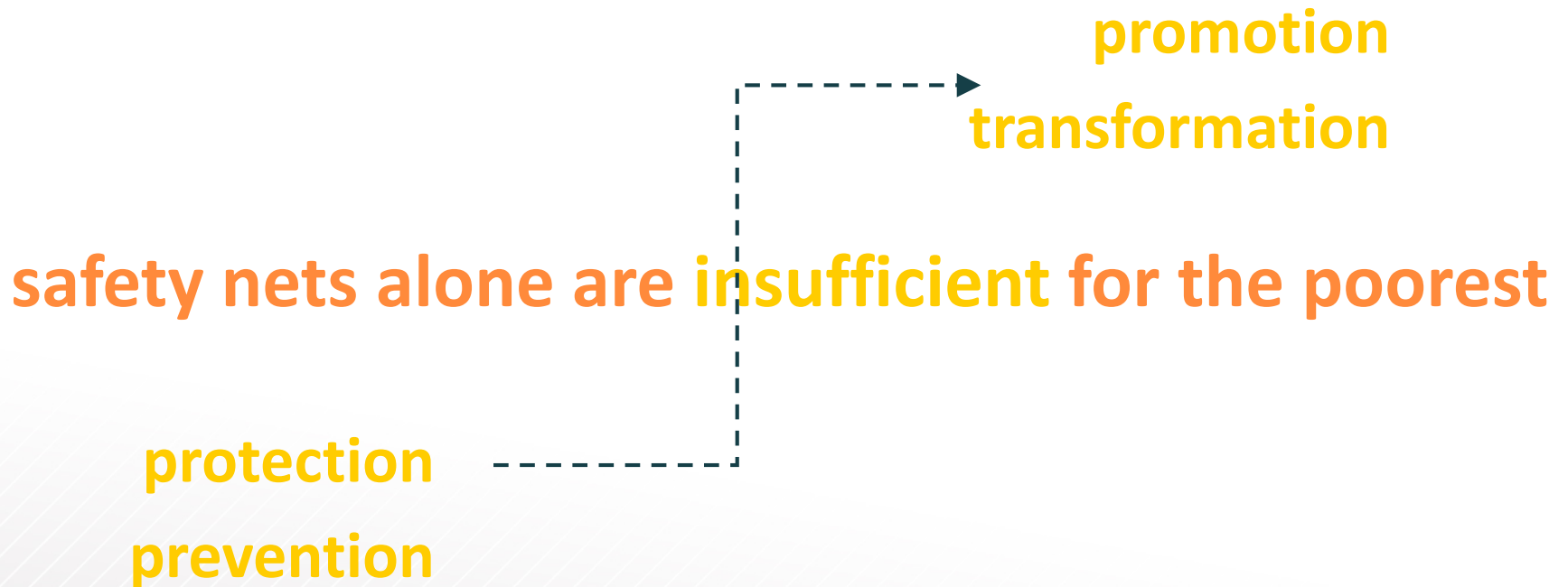
Components of Social Protection System



Safety Nets for Different Risk Categories

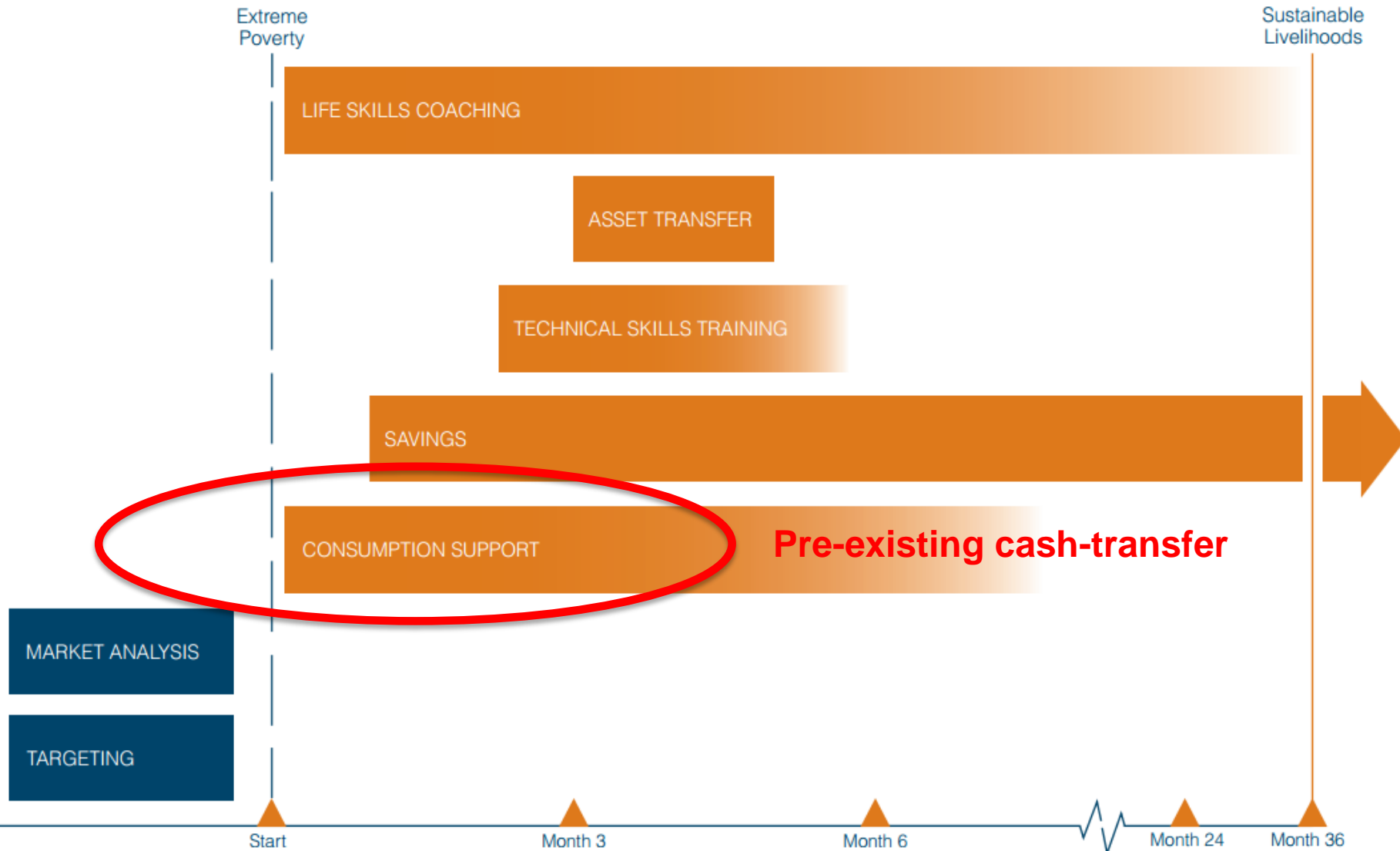
- Transient food insecurity (covariant risk)
 - natural disasters
 - macroeconomic shocks
 - socio-political instability
- Vulnerable demographic categories (elderly, disabled)
- Chronic and structural poverty

Creating Pathways for the Poorest



The Graduation Approach

THE GRADUATION INTO SUSTAINABLE LIVELIHOODS APPROACH



Process of Change Framework

Program inputs (protective, promotional)

- Consumption stipend
- Savings services
- Skills training
- Asset transfer
- Coaching
- Health services
- Additional services (housing, sanitary latrines)
- VACs

Smooth consumption
Inculcate regular savings
Develop livelihoods
Facilitate access to state entitlements
Improve hygiene and sanitation conditions
Participate in the community
Build self-confidence

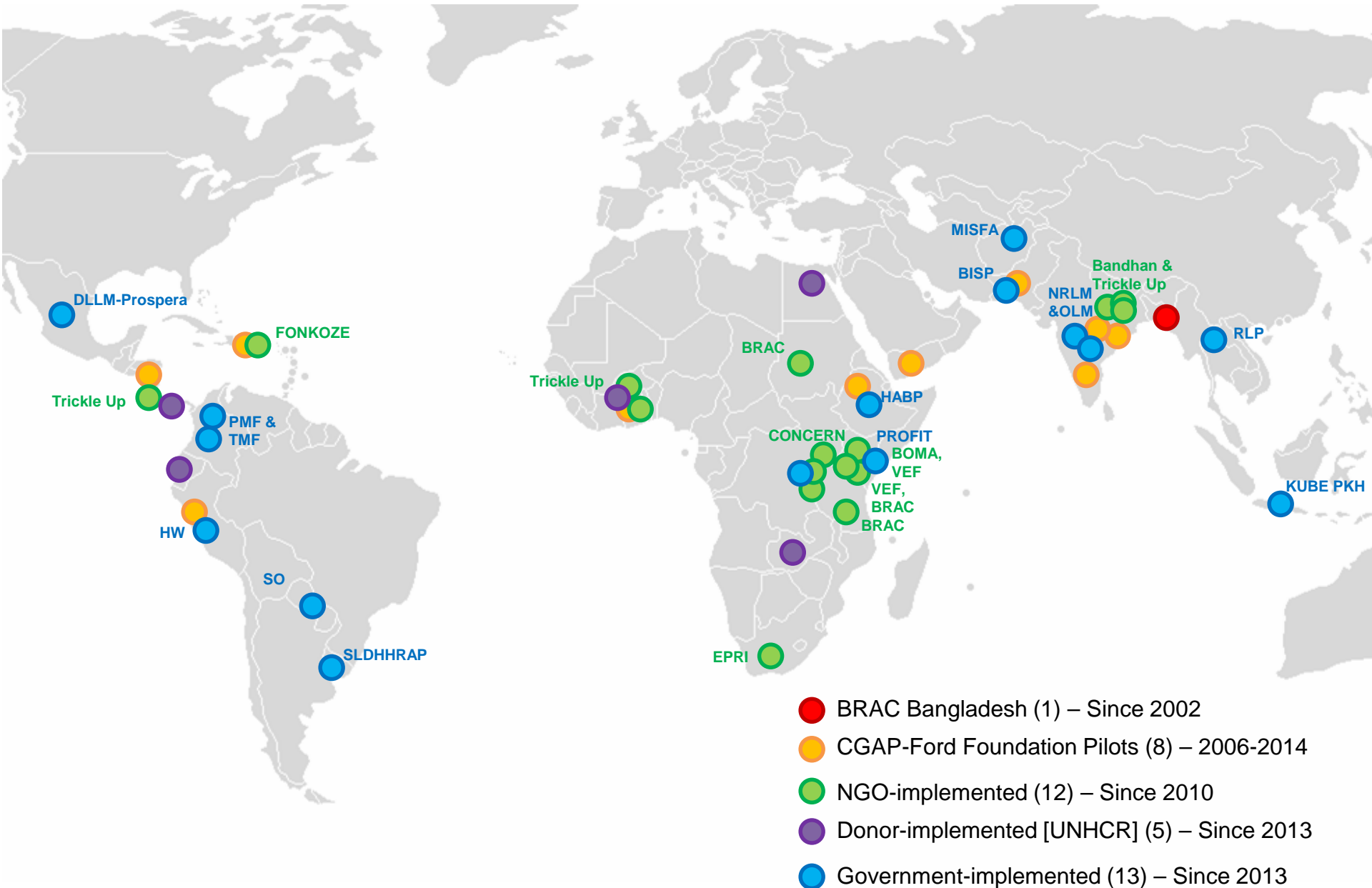
Intended outcomes (economic, social, aspirational)

- Diversified sources of income
- Savings for income shocks
- Food security
- Access to public health and education services
- Improved health
- Visibility in the community
- Setting goals for the future

2006-2014: 10 Pilots in 8 Countries



New Graduation Adaptations (April 2016)



Local Context Critical to Program Design

NOT EXHAUSTIVE

Markets

Healthcare

Education

Infrastructure

**Natural shocks
and
resources**

**Macro-
economic
shocks**

Still Learning: microfinancegateway/graduation



MICROFINANCE
GATEWAY

HOME > TOPICS > GRADUATION INTO SUSTAINABLE LI...

Graduation into Sustainable Livelihoods



People living in extreme poverty are among the bottom 50 percent of those living below national poverty lines. At the global level, they are those living with less than \$1.25 a day, estimated in 2012 to be nearly 1.2 billion people. Although the extreme poor are those most in need, they are often, if inadvertently, overlooked by many development interventions. With a few notable exceptions, both microfinance and livelihoods programs typically do not reach the extreme poor.

Adapting a method pioneered by BRAC in Bangladesh and drawing from the most relevant aspects of social protection, livelihoods development, and access to finance to deliver results, the Graduation Approach targets the extreme poor with the goal of moving them out of extreme poverty and into a sustainable livelihood in a time-bound manner.

The Graduation Approach:

- Draws on the most relevant aspects of social protection, livelihoods development, and access to finance to deliver results;
- Combines support for immediate needs with longer term human capital

Related topics



ADDITIONAL RESOURCES

Recommended Resources

Frequently Asked Questions¹

CGAP

Advancing financial inclusion to improve the lives of the poor



Foreign Affairs, Trade and
Development Canada
Affaires étrangères, Commerce
et Développement Canada



BILL & MELINDA
GATES foundation



MetLife Foundation
Ensuring Access. Empowering Communities.

